



Total Solution Provider in Saw Device

SA70G2D1

70.0 MHz IF SAW Filter

20.1MHz Bandwidth

Revision 1: 29. Oct. 2007



- Electrical Characteristics
 - Package Dimensions
 - Testing Environment
 - Frequency Characteristics
-

SAWNICS Inc.

460 Cheonheung-ri, Seonggeo-eup, Cheonan-si, Chungcheongnam-do, 330-836 / Korea.
Tel: +82 41 550 9372 / Fax: +82 41 550 9399 / www.sawnics.com

□ Electrical Characteristics

Maximum Ratings

Parameters Description	Unit	Minimum	Typical	Maximum
Operation Temperature Range	°C	-30	-	80
Storage Temperature Range	°C	-40	-	85
Maximum DC Voltage	V	-	-	10
Maximum Input Power	dBm	-	-	10
Source Impedance (single ended) ⁽¹⁾	Ω	-	50	-
Load Impedance (single ended) ⁽¹⁾	Ω	-	50	-
Package type & size	D1			
Length x Width	mm ²	-	20.0 x 9.8	-
Height	mm	-	-	1.8

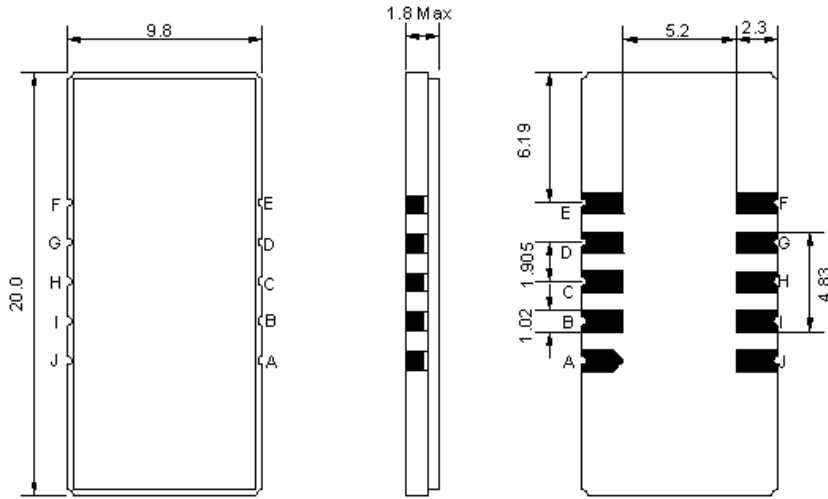
Electrical Specification

Parameters Description	Unit	Minimum	Typical	Maximum
Center Frequency (Fo)	MHz	69.95	70.05	70.15
Insertion Loss at Fo	dB	-	22.5	24.0
Amplitude Ripple Variation at Fo ±9.75 MHz	dB _{p-p}	-	0.6	1.0
Group Delay Variation at Fo ±9.75 MHz	nsec	-	60	100
Absolute Delay at Fo	µsec	-	2.35	-
Temperature Coefficient	ppm/°C	-	-72	-
Bandwidth at -1.0 dB	MHz	-	20.10	-
Bandwidth at -3.0 dB	MHz	20.30	20.40	-
Bandwidth at -40.0 dB	MHz	-	21.70	21.80
Lower Sidelobe	dB	50	54	-
Upper Sidelobe	dB	50	53	-

Notes : (1) With Matching Network (Ref. Testing Environment Circuit as shown below).

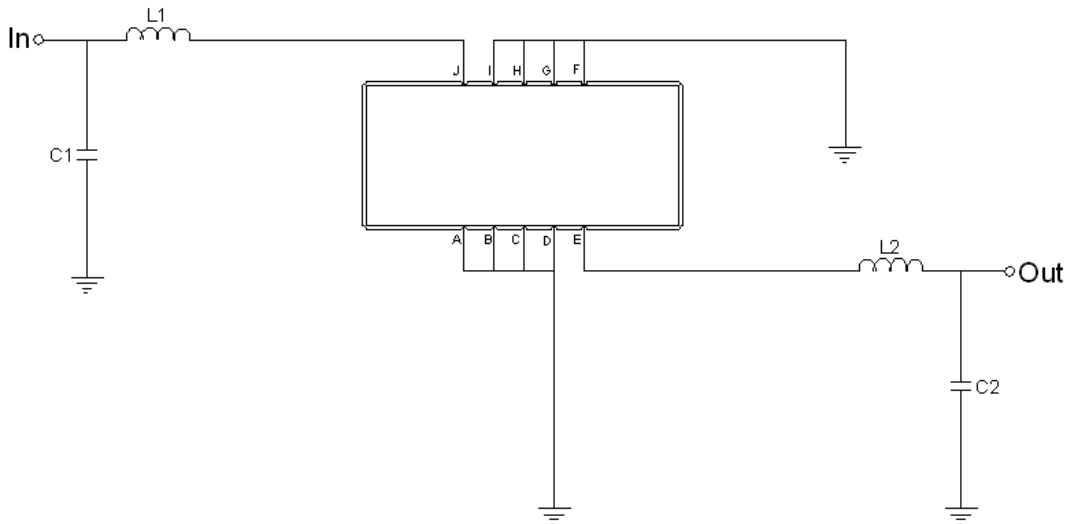
Those impedances could be modified with different impedance values and/or structures, if necessary.

Package Dimensions



Pin Description	
A, B, C, D, F, G, H, I	Ground
J	Input
E	Output

Testing Environment



Test Fixture & Values	
Input	L1=220nH, C1=24pF
Output	L2=180nH, C2=0pF
Source/Load Impedance	50 Ω

□ Frequency Characteristics

Frequency Response

